

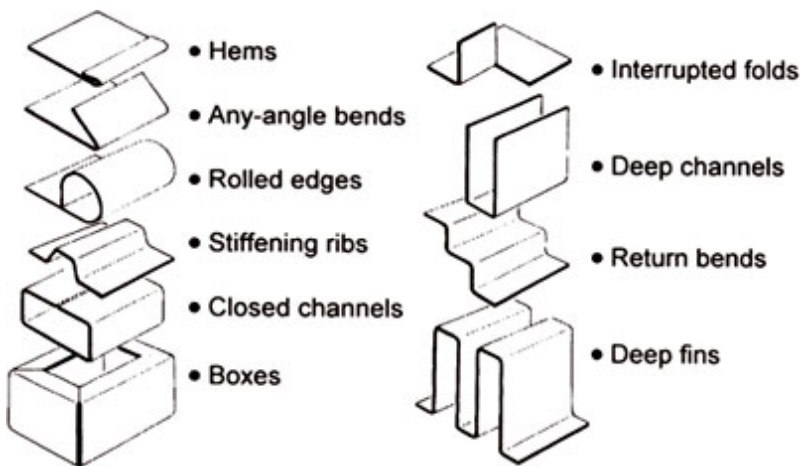
# EB1000

**electra**brake

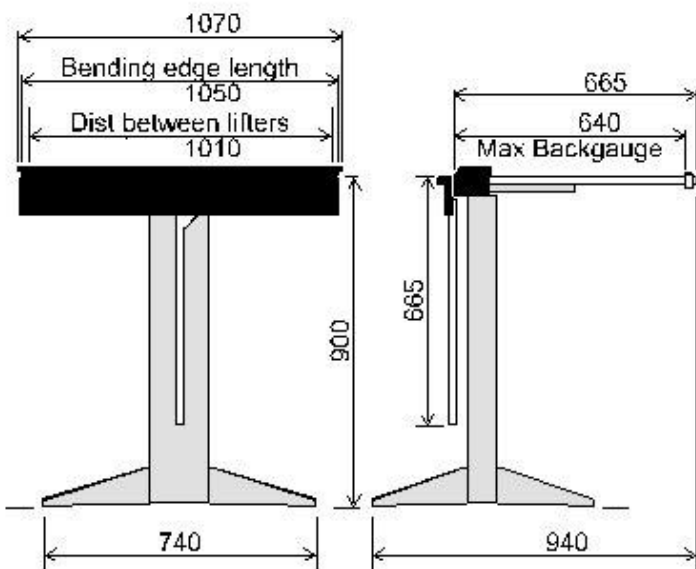
electromagnetic sheet metal folding machines

MATERIAL (yield/ult stress)	THICKNESS (mm)	LIP WIDTH minimum (mm)	BEND RADIUS Typical (mm)
<b>Mild Steel</b> (250/320 MPa)	1.6	30*	3.5
	1.2	15	2.2
	1.0	10	1.5
<b>Aluminium</b> Grade 5005 H34 (140/160 MPa)	1.6	30*	1.8
	1.2	15	1.2
	1.0	10	1.0
<b>Stainless Steel</b> Grades 304, 316 (210/600MPa)	1.0	30*	3.5
	0.9	15	3.0
	0.8	10	1.8

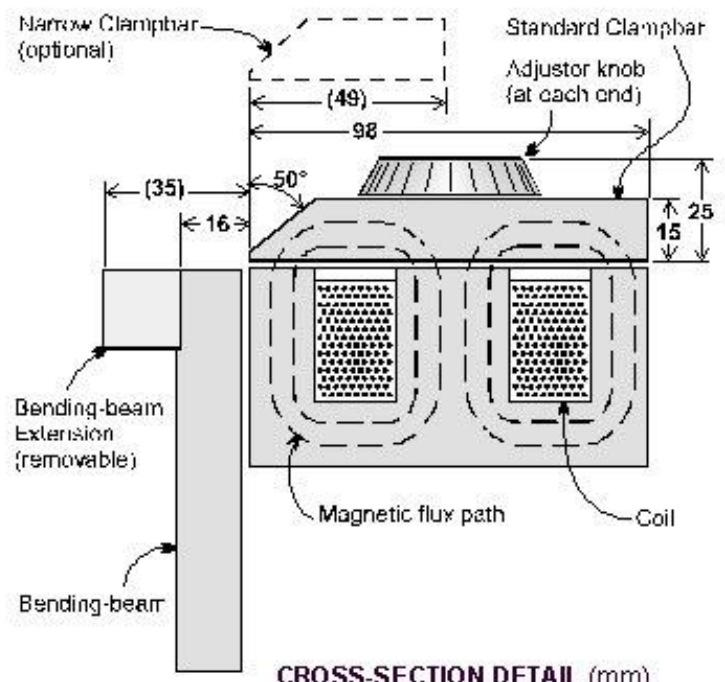
\* With Standard bending beam extension fitted. For most non-ferrous metals (copper, brass, zinc) refer to Aluminium above.



Special tooling can be quickly improvised from pieces of steel to help fold-up difficult shapes.



FRONT & SIDE ELEVATIONS



CROSS-SECTION DETAIL (mm)